

LED Charlieplexed Matrix - 9x16 LEDs - Red

PRODUCT ID: 2947

IN STOCK

1

ADD TO CART

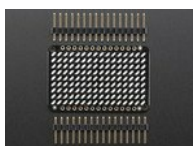
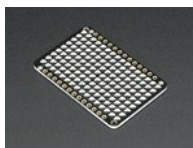
☐ Also include 1 x [Adafruit 16x9 Charlieplexed PWM LED Matrix Driver - IS31FL3731](#) (0)

1-9

10-99

100+

ADD TO WISHLIST

[DESCRIPTION](#)[TECHNICAL DETAILS](#)

DESCRIPTION

These are 9x16 Charlieplexed LEDs designed to match with the [Adafruit 16x9 Charlieplexed PWM LED Matrix Driver - IS31FL3731](#). You don't get any resistors or driver chips with this grid, its

just a mess of LEDs in a charlieplexed arrangement

This is the Red version. [Check out our other colors!](#)

[Check out our detailed tutorial for Arduino & CircuitPython support, pinouts, assembly, wiring, and more!](#)

TECHNICAL DETAILS

- 43.3mm x 27.8mm x 2.4mm / 1.7" x 1.1" x 0.09"
- Weight: 3.8g
- [Datasheet](#), [schematic](#), [EagleCAD PCB files](#), and [Fritzing](#) available in the product tutorial



LEARN



[IS31FL3731 16x9
Charlieplexed PWM LED
Driver](#)

144 individually dimmable
PWM LEDs over I2C

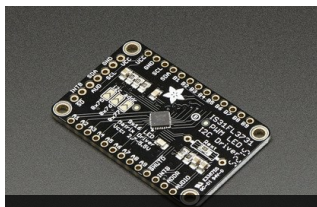


[Animated Flame Pendant](#)
Turn on your heart light!

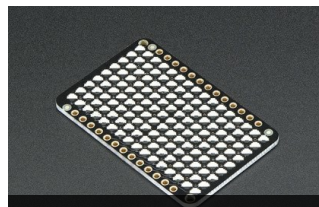


[CircuitPython Hardware:
Charlieplex LED Matrix](#)
How to use Charlieplex LED
matrices with CircuitPython!

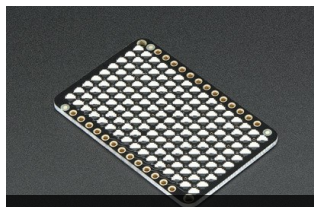
MAY WE ALSO SUGGEST...



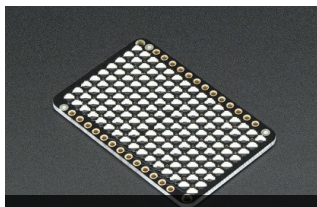
Adafruit 16x9 Charlieplexed



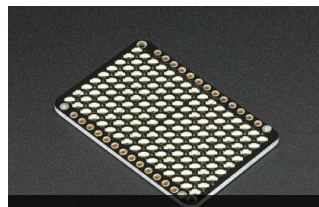
LED Charlieplexed Matrix -



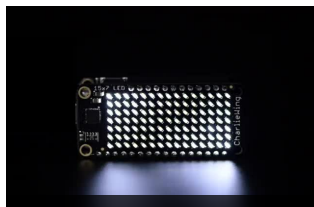
LED Charlieplexed Matrix -



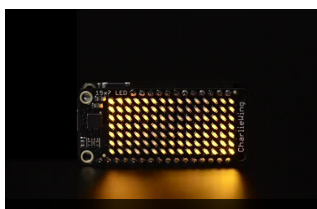
LED Charlieplexed Matrix -



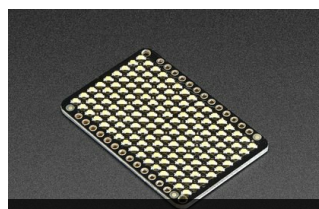
LED Charlieplexed Matrix -



Adafruit 15x7 CharliePlex



Adafruit 15x7 CharliePlex



LED Charlieplexed Matrix -



Adafruit 15x7 CharliePlex



DISTRIBUTORS [EXPAND TO SEE DISTRIBUTORS](#)

- [CONTACT](#)
- [SUPPORT](#)
- [DISTRIBUTORS](#)
- [EDUCATORS](#)
- [JOBS](#)
- [FAQ](#)
- [SHIPPING & RETURNS](#)
- [TERMS OF SERVICE](#)
- [PRIVACY & LEGAL](#)
- [ABOUT US](#)

"Achieving a goal provides immediate satisfaction; the process of achieving a goal is a lasting pleasure" - Evelyn Berezin

ENGINEERED IN NYC Adafruit®



4.9 ★★★★★
Google
Customer Reviews