

PLD E 400 W 250 - LED enclosure light



2702221

<https://www.phoenixcontact.com/us/products/2702221>

Please be informed that the data shown in this PDF document is generated from our online catalog. Please find the complete data in the user documentation. Our general terms of use for downloads are valid.



LED enclosure light, 24 V DC, length: 250 mm, degree of protection: IP20, can be swiveled, can be switched in series, including mounting accessories

Product description

The LED light is designed to illuminate the interior of control cabinets. The prismatic integrated into the light cover ensures optimum illumination of the control cabinet. You can mount the light without tools via the clip system. You can connect several lights in succession. You can switch the light on and off either via the integrated button or via an external door position switch.

Your advantages

- Tool-free mounting, thanks to clip fastening
- Wiring via sensor/actuator cables with M8 snap-in technology
- Series connection reduces cabling effort for control cabinets arranged in series
- Optimum lighting of the control cabinet, thanks to integrated prismatic and capacity to swivel
- Swiveling enables optimum adjustment to the relevant control cabinet depth
- LED service life of 50,000 h (L70 value) prevents bulb replacement

Commercial data

| | |
|--------------------------------------|--------------------------------|
| Item number | 2702221 |
| Packing unit | 1 pc |
| Minimum order quantity | 1 pc |
| Note | Made to order (non-returnable) |
| Sales key | DR08 |
| Product key | DRL232 |
| Catalog page | Page 499 (C-6-2019) |
| GTIN | 4055626057293 |
| Weight per piece (including packing) | 166 g |
| Weight per piece (excluding packing) | 163.7 g |
| Customs tariff number | 94054231 |
| Country of origin | DE |

PLD E 400 W 250 - LED enclosure light



2702221

<https://www.phoenixcontact.com/us/products/2702221>

Technical data

Notes

Note on application

| | |
|---------------------|-------------------------|
| Note on application | Only for industrial use |
|---------------------|-------------------------|

Utilization restriction

| | |
|----------|---|
| EMC note | EMC: class A product, see manufacturer's declaration in the download area |
|----------|---|

Product properties

| | |
|--------------------|---|
| Product type | Control cabinet lighting |
| Application | Control cabinet |
| Mounting position | any |
| Special properties | can be swiveled $\pm 90^\circ$ swivel range |
| | can be switched in series |
| | including mounting accessories |
| Socket type | No socket |

Electrical properties

| | |
|---|-----|
| Maximum power dissipation for nominal condition | 2 W |
|---|-----|

Supply: Module electronics

| | |
|----------------------|------------------------|
| Connection method | M8 connector (snap-in) |
| Number of positions | 3 |
| Supply voltage | 24 V DC |
| Supply voltage range | 19.2 V DC ... 30 V DC |
| Power consumption | 1.5 W |

Connection data

| | |
|-------------------|------------------------|
| Connection method | M8 connector (snap-in) |
|-------------------|------------------------|

Signaling

Light properties

| | |
|-------------------------|--|
| Source of light type | LED |
| Number of LEDs | 5 |
| Color temperature | 5000 K |
| Color rendering index | 75 |
| Luminous flux | 140 lm (Net luminous flux) |
| Illumination | max. 335 lx (50 cm distance) |
| | max. 85 lx (Distance of 1 m) |
| Ordinance | Delegated Regulation (EU) 2019/2015 |
| Energy efficiency class | F (1 light source) |
| Note | This product contains an energy efficiency class F light source. |


PLD E 400 W 250 - LED enclosure light



2702221

<https://www.phoenixcontact.com/us/products/2702221>

Dimensions

| | |
|---------------------|--|
| Dimensional drawing |  |
| Width | 23 mm |
| Height | 38 mm |
| Length | 250 mm |

Material specifications

| | |
|------------------|-------------------------|
| Color | traffic grey A RAL 7042 |
| Material () | Plastic |
| Housing material | Plastic |

Environmental and real-life conditions

Ambient conditions

| | |
|--|---|
| Ambient temperature (operation) | -25 °C ... 60 °C |
| Degree of protection | IP20 |
| Air pressure (operation) | 70 kPa ... 106 kPa (up to 3000 m above sea level) |
| Air pressure (storage/transport) | 70 kPa ... 106 kPa (up to 3000 m above sea level) |
| Ambient temperature (storage/transport) | -40 °C ... 85 °C |
| Permissible humidity (operation) | 5 % ... 95 % |
| Permissible humidity (storage/transport) | 5 % ... 95 % |

Standards and regulations

| | |
|------------------|-----|
| Protection class | III |
|------------------|-----|

Mounting

| | |
|-------------------|---|
| Mounting type | Clip mounting |
| Assembly note | Magnet attachment available as an accessory |
| | Screw fixings available as accessories |
| Mounting position | any |

PLD E 400 W 250 - LED enclosure light

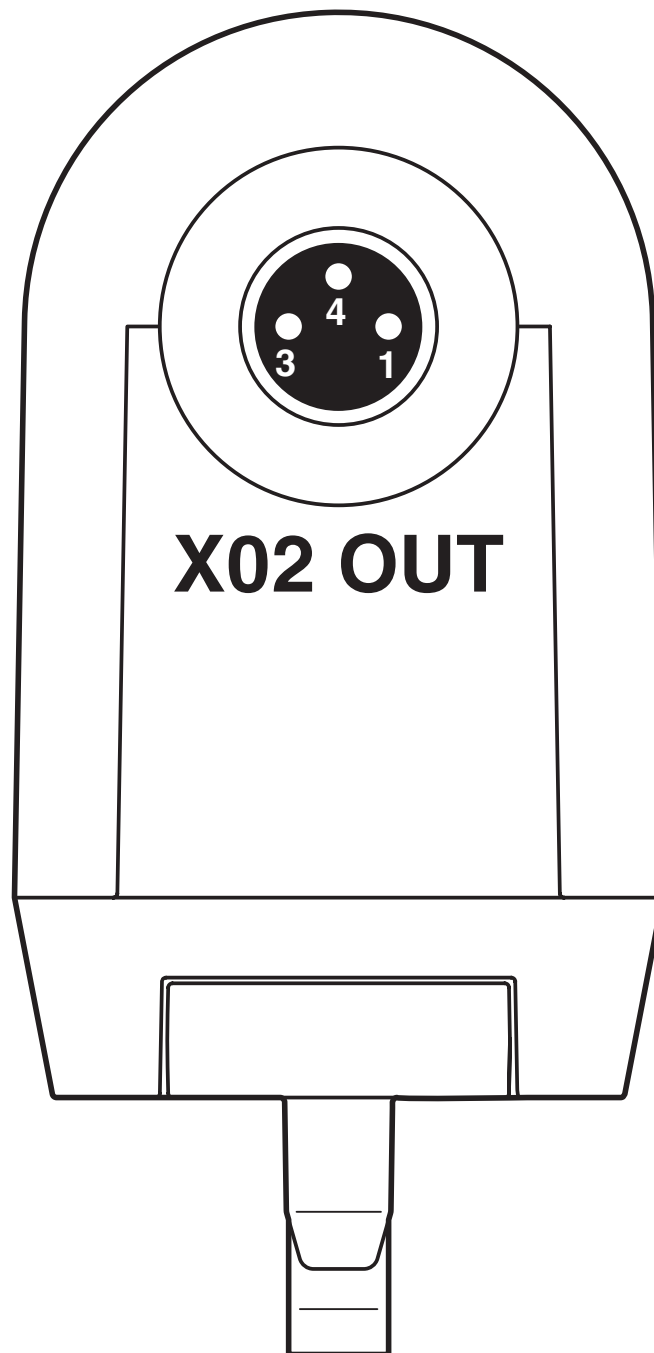
2702221

<https://www.phoenixcontact.com/us/products/2702221>



Drawings

Connection diagram



Forwarding of the supply voltage with the series connection of lights

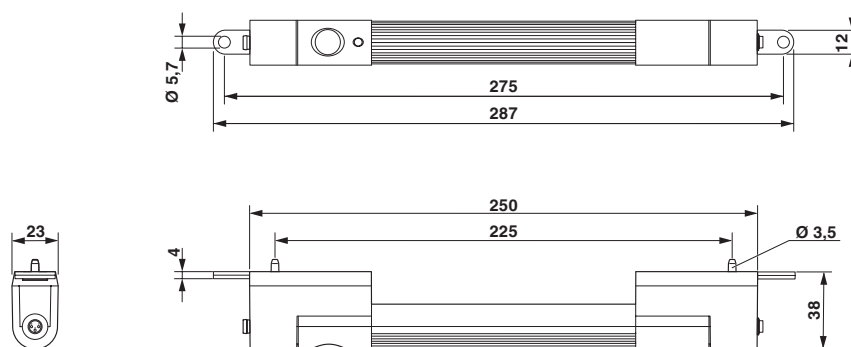
PLD E 400 W 250 - LED enclosure light

2702221

<https://www.phoenixcontact.com/us/products/2702221>

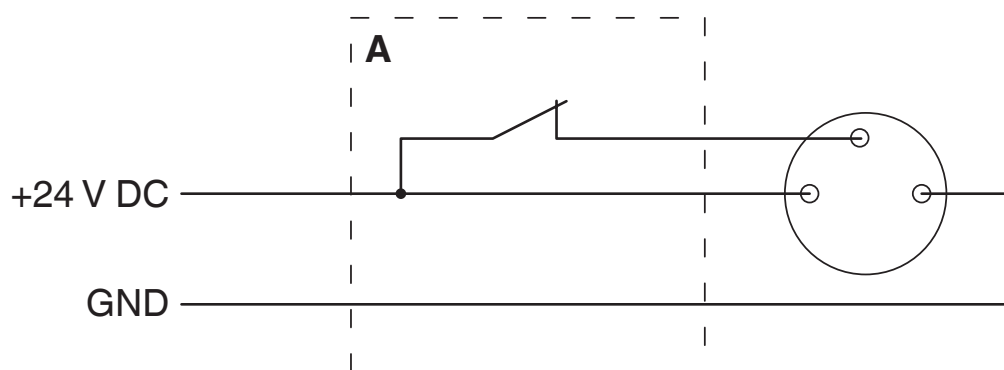


Dimensional drawing



Dimensional drawing for screw mounting

Connection diagram



Connection of the light using a door position switch (A)

PLD E 400 W 250 - LED enclosure light



2702221

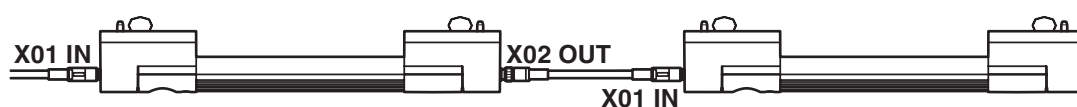
<https://www.phoenixcontact.com/us/products/2702221>

Schematic diagram



Connection of a light

Schematic diagram



Series connection of two lights

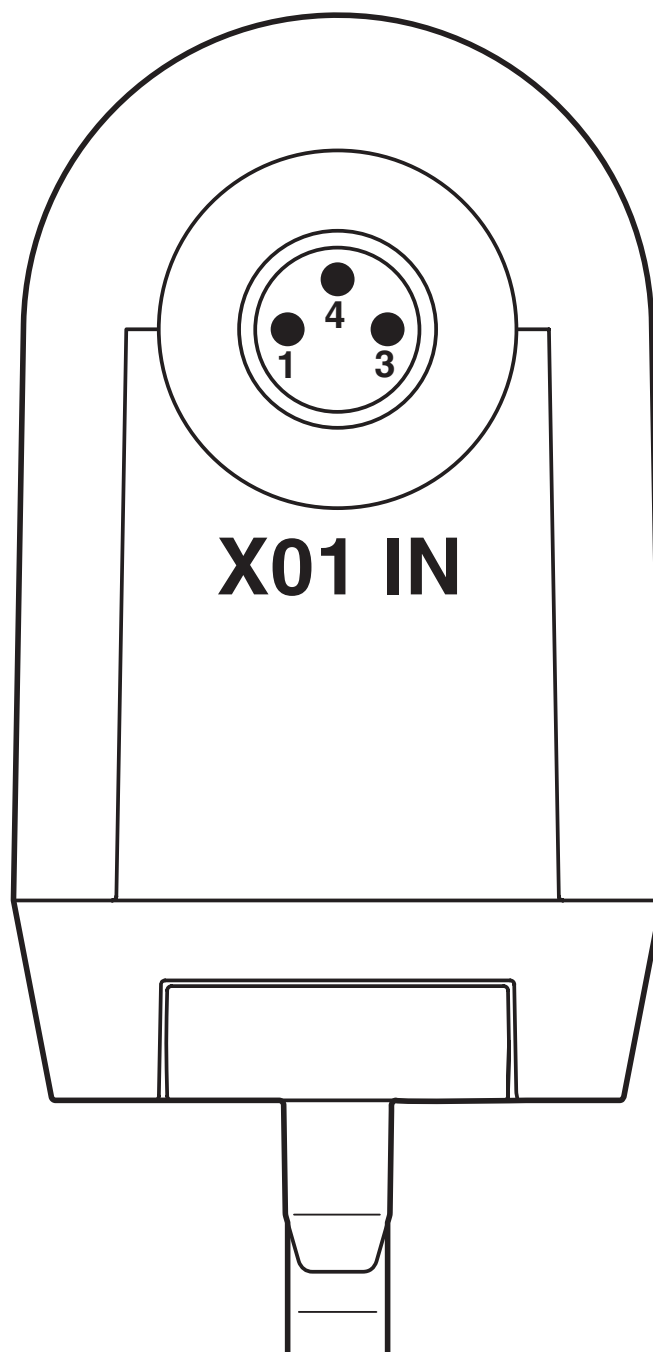
PLD E 400 W 250 - LED enclosure light

2702221

<https://www.phoenixcontact.com/us/products/2702221>



Connection diagram



Connection of the supply voltage of a light

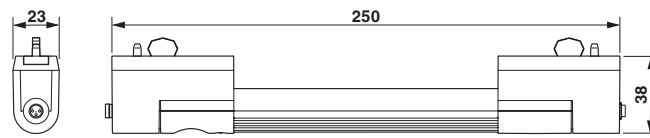
PLD E 400 W 250 - LED enclosure light

2702221

<https://www.phoenixcontact.com/us/products/2702221>

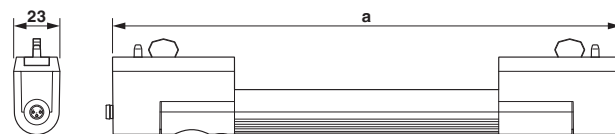


Dimensional drawing



Dimensional drawing

Dimensional drawing



PLD E 400 W 250 - LED enclosure light



2702221

<https://www.phoenixcontact.com/us/products/2702221>

Classifications

ECLASS

| | |
|-------------|----------|
| ECLASS-11.0 | 27182808 |
| ECLASS-12.0 | 27182808 |
| ECLASS-13.0 | 27182808 |

ETIM

| | |
|----------|----------|
| ETIM 9.0 | EC000321 |
|----------|----------|

UNSPSC

| | |
|-------------|----------|
| UNSPSC 21.0 | 32151500 |
|-------------|----------|

PLD E 400 W 250 - LED enclosure light



2702221

<https://www.phoenixcontact.com/us/products/2702221>

Environmental product compliance

| | |
|---|--|
| EU RoHS | |
| Fulfills EU RoHS substance requirements | Yes, No exemptions |
| China RoHS | |
| Environment friendly use period (EFUP) | EFUP-E |
| | No hazardous substances above the limits |
| EU REACH SVHC | |
| REACH candidate substance (CAS No.) | No substance above 0.1 wt% |

Phoenix Contact 2025 © - all rights reserved
<https://www.phoenixcontact.com>

Phoenix Contact USA
586 Fulling Mill Road
Middletown, PA 17057, United States
(+717) 944-1300
info@phoenixcon.com