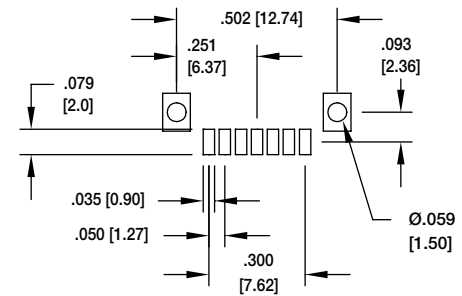
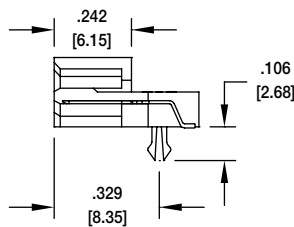
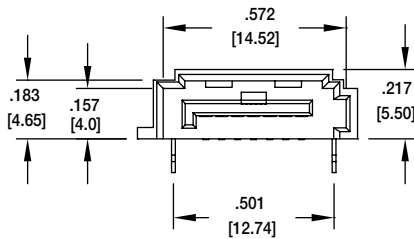
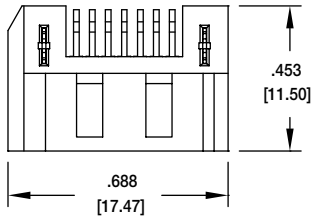


### SATA-A SINGLE R/A SMT

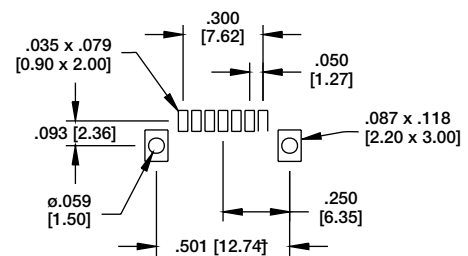
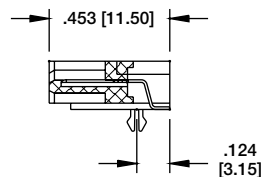
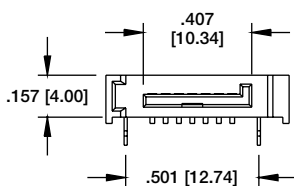
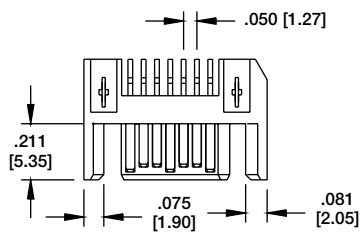
#### SATA-A-PL-SMT-K



Recommended PCB Layout

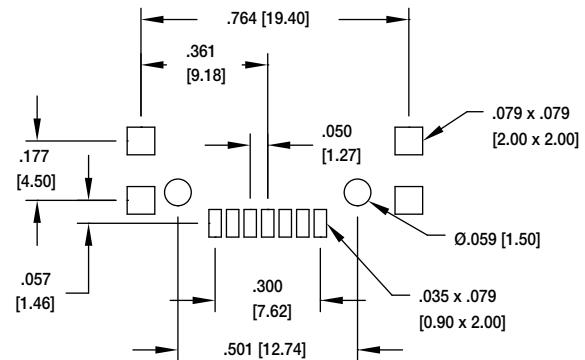
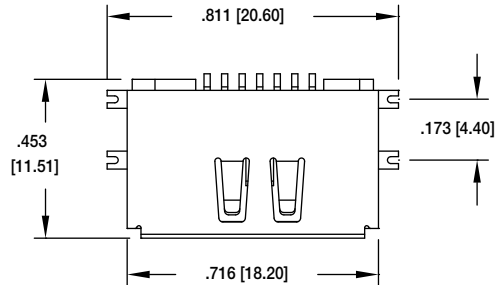
### SATA-C SINGLE R/A SMT

#### SATA-C-PR-SMT-K

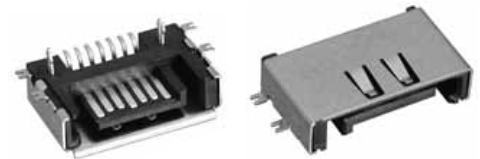
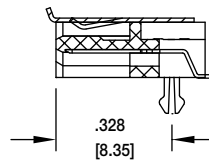
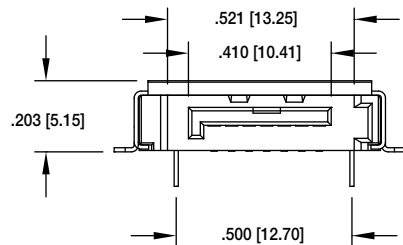


Recommended PCB Layout

### SATA-B SHIELDED, R/A, TRUE SMT

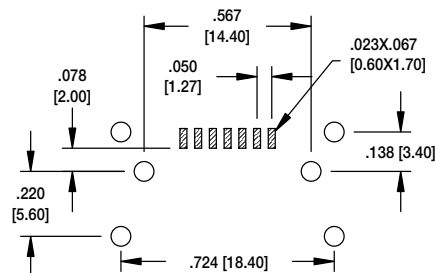
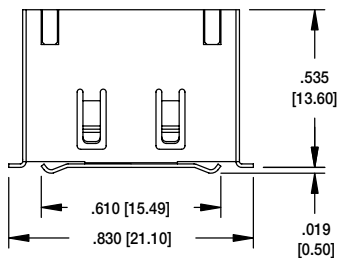


#### Recommended PCB Layout

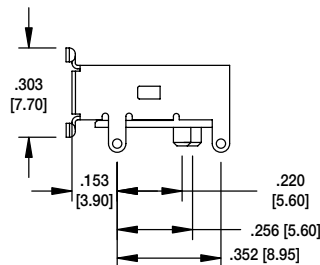
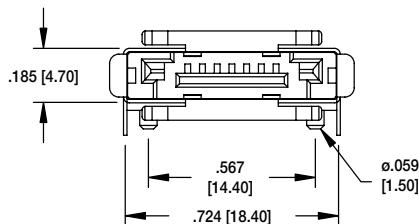


SATA-B-PL-SMT-K

### SATA-J SHIELDED, R/A, SMT

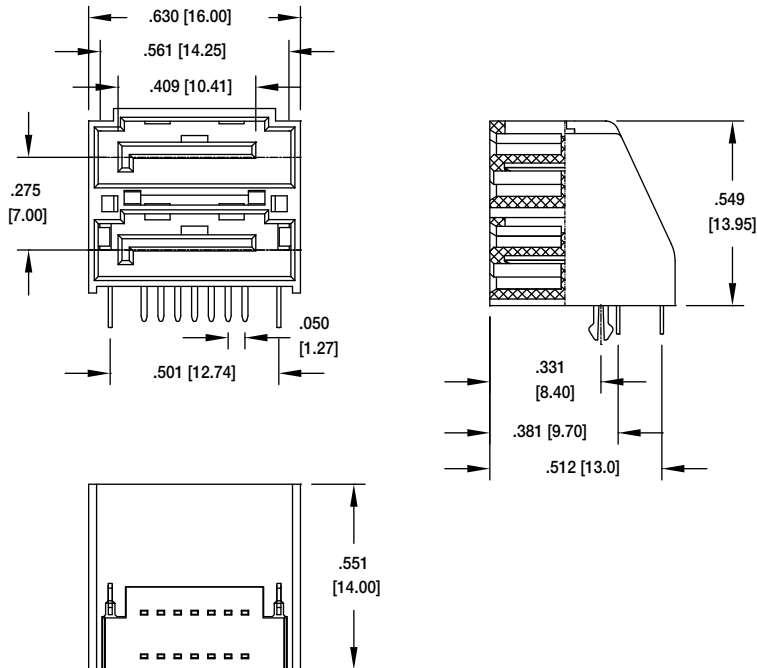


#### Recommended PCB Layout

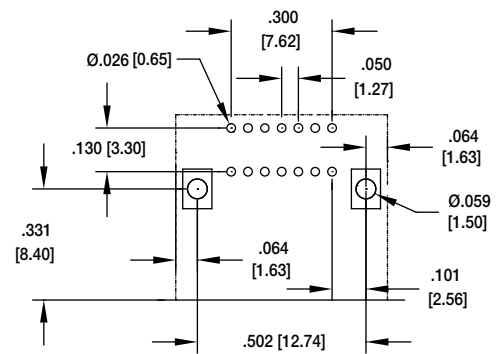


SATA-J-NP-SMT-P-S-PG

#### SATA-D DUAL STACKED, SMT

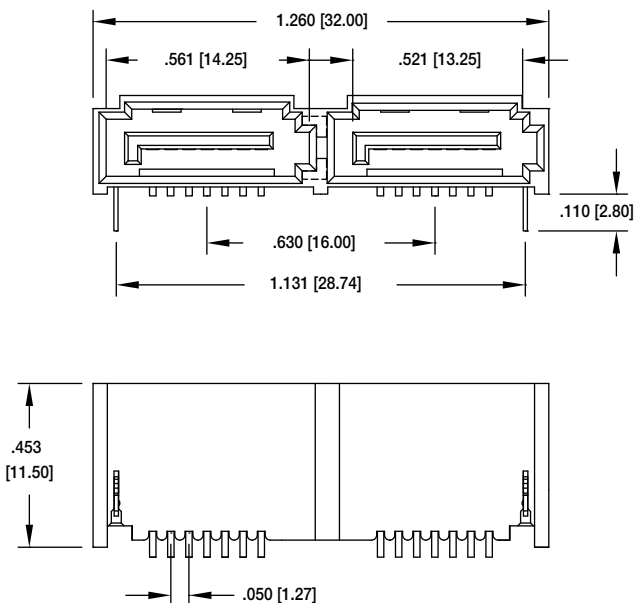


SATA-D-PL-RT

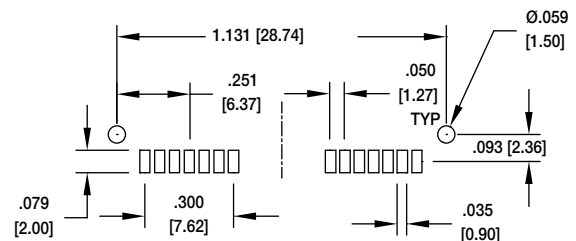
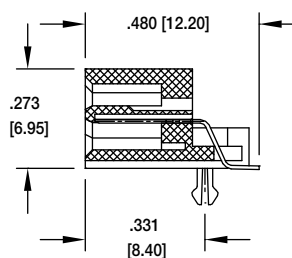


Recommended PCB Layout

#### SATA-E DUAL, SIDE BY SIDE THRU-HOLE

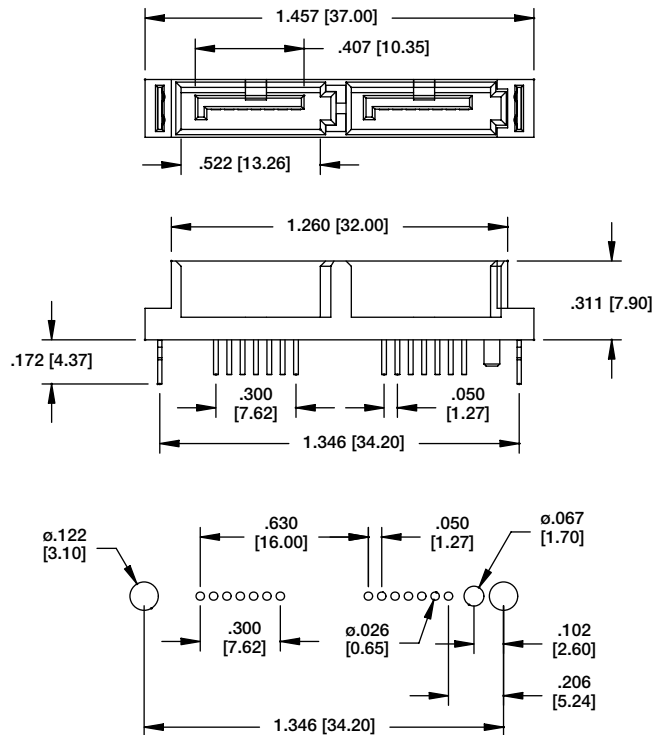


SATA-E-PR-SMT-K



Recommended PCB Layout

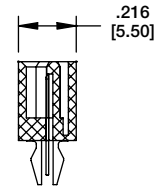
#### SATA-F DUAL VERTICAL THRU-HOLE



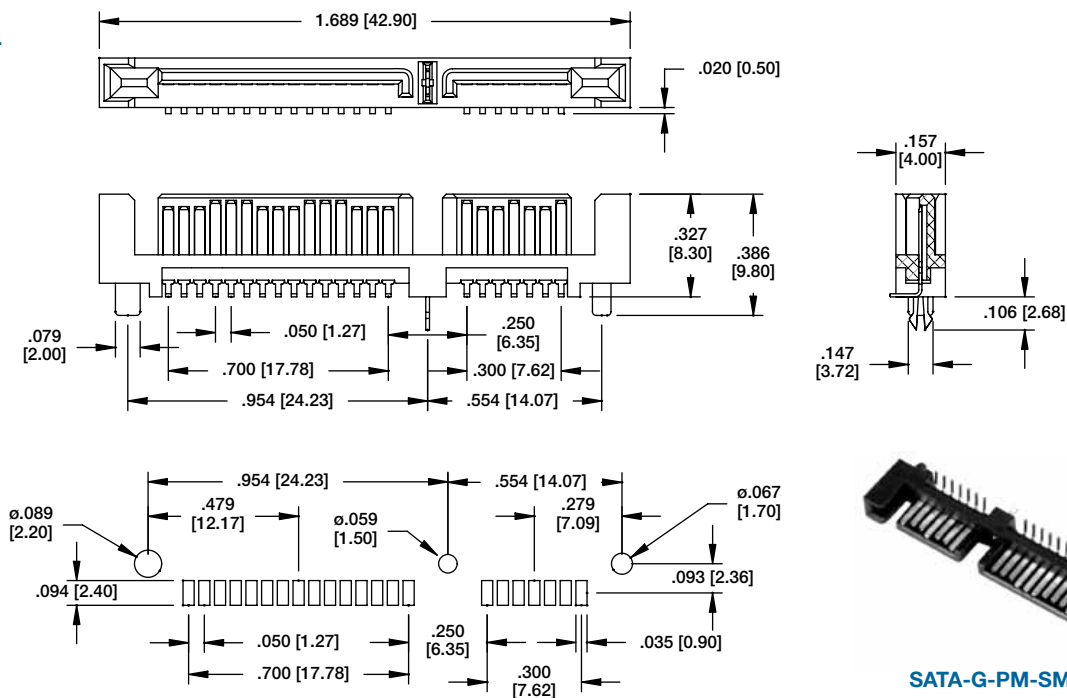
Recommended PCB Layout



SATA-F-PL-VT-K-P



#### SATA-G DUAL VERTICAL SMT

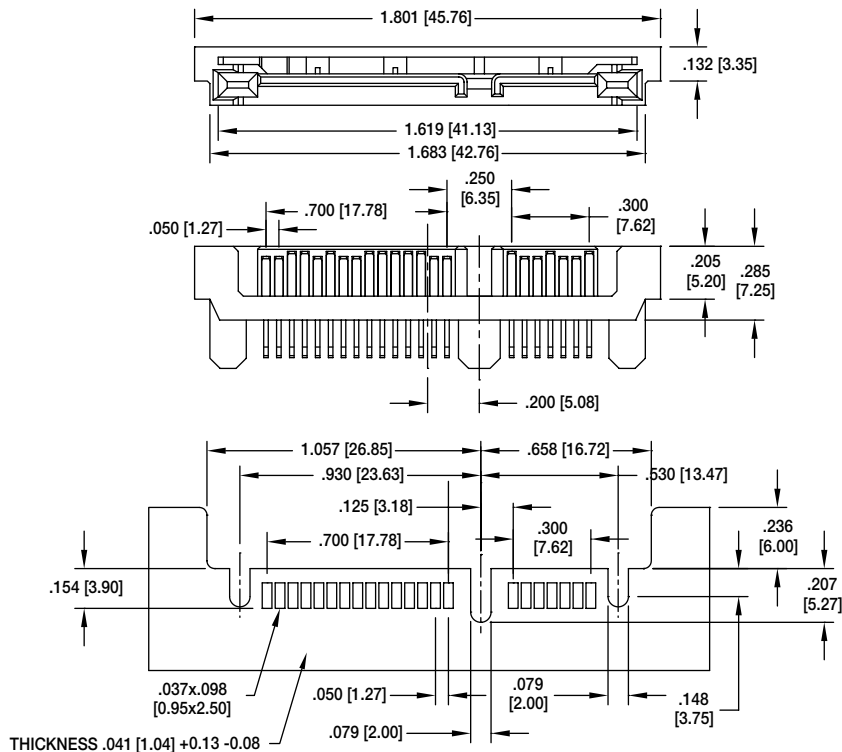


Recommended PCB Layout

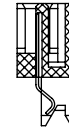


SATA-G-PM-SMT

**SATA-M**  
DUAL VERTICAL  
THRU-HOLE

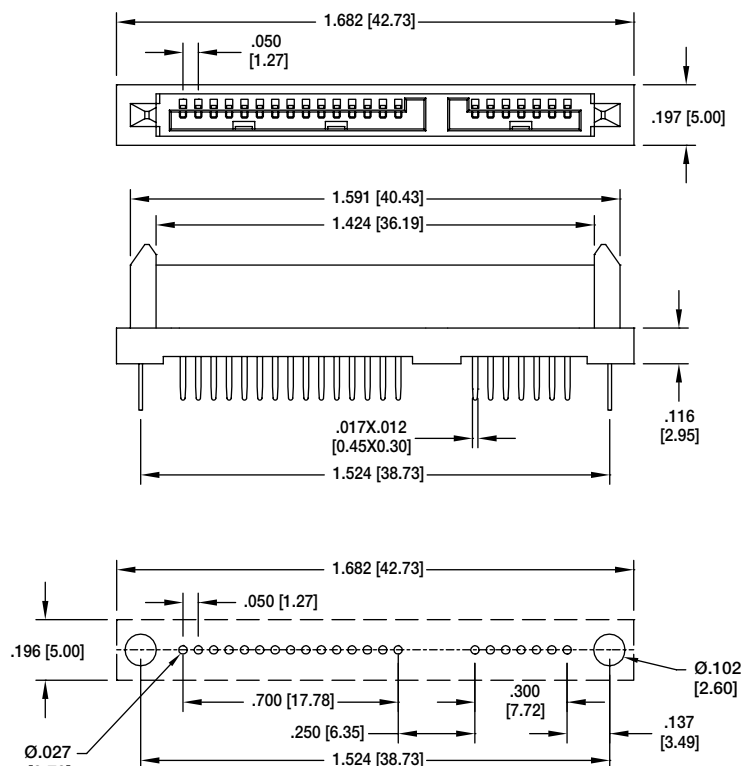


Recommended PCB Layout

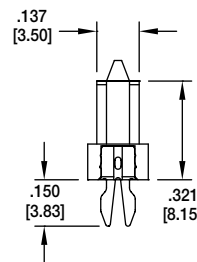


SATA-M-PM-SMT

**SATA-G**  
DUAL  
STRADDLE  
MOUNT



Recommended PCB Layout



SATA-G-PM-VT