



## Edge-Launch SMA Connector for 1.6mm / 0.062" Thick PCBs

PRODUCT ID: 1865

OUT OF STOCK

Please enter your details below and we will send you an email when this item is back in stock. You will only be emailed about this product!

YOUR NAME

YOUR EMAIL

NOTIFY ME

ADD TO WISHLIST

DESCRIPTION

TECHNICAL DETAILS



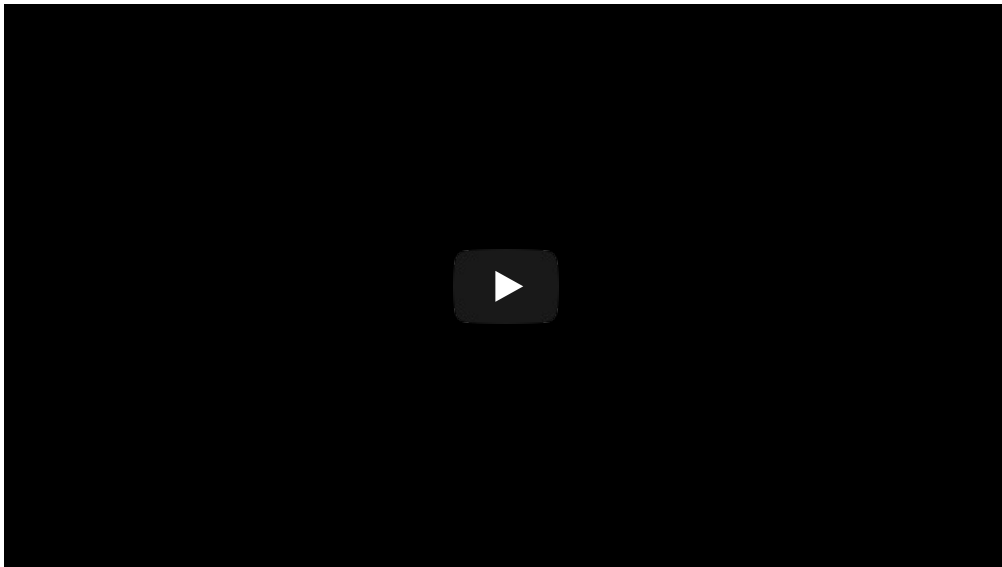
## DESCRIPTION

This is a great connector for anyone doing RF work, when an SMA connector is required. It hugs the edge of a standard 0.063" thick PCB and 'launches' off of the edge. We like these for

Downloaded from [Arrow.com](http://Arrow.com). With any SMA plug, we also have an SMA to RP-

SMA in case your antenna is RP-SMA

You can find an Eagle footprint for this part in the [Adafruit Eagle Library](#), it's called [SMA\\_EDGELAUNCH](#)

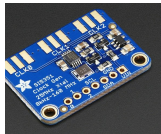


## TECHNICAL DETAILS

- Impedance: 50 ohm
- Diameter of Jack: 6.1mm / .24"
- Width of Plug: 6.4mm / .25"
- Total Length of Connector: 13.5mm / 0.53"
- Weight: 2g



## LEARN



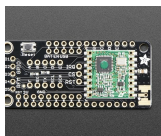
[Adafruit Si5351 Clock Generator Breakout](#)

Generate ALL the frequencies!



[Adafruit RFM69HCW and RFM9X LoRa Packet Radio Breakouts](#)

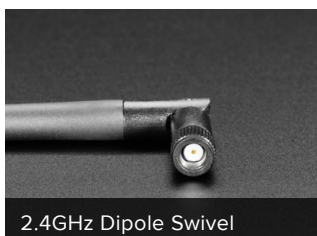
Radio transceiver modules for long distance data communication



[Radio FeatherWing](#)

Packet FSK or LoRa radio add-on for your favvy Feather

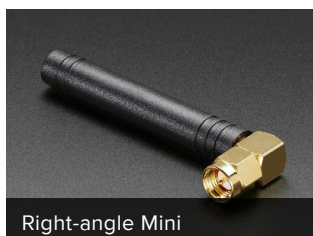
## MAY WE ALSO SUGGEST...



2.4GHz Dipole Swivel



SMA Jack to RP-SMA Plug



Right-angle Mini



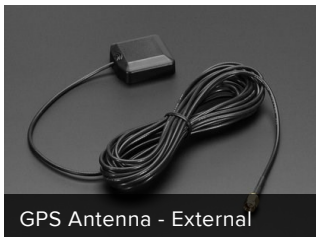
2.4GHz Dipole Swivel



SMA to uFL/u.FL/IPX/IPEX



RP-SMA Jack to SMA Plug



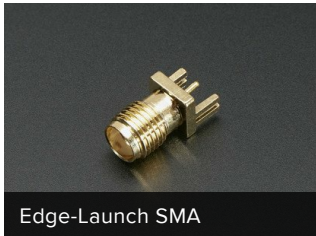
GPS Antenna - External



RP-SMA to



Mini GSM/Cellular Quad-



Edge-Launch SMA



Great Scott Gadgets



Adafruit Si5351A Clock

## DISTRIBUTORS [EXPAND TO SEE DISTRIBUTORS](#)

[CONTACT](#)

[SUPPORT](#)

[DISTRIBUTORS](#)

[EDUCATORS](#)

[JOBS](#)

[FAQ](#)

[SHIPPING & RETURNS](#)

[TERMS OF SERVICE](#)

[PRIVACY & LEGAL](#)

[ABOUT US](#)

ENGINEERED IN NYC Adafruit®

*"Let the beauty of what you love be  
what you do" - [Rumi](#)*



4.9 ★★★★★  
Google  
Customer Reviews