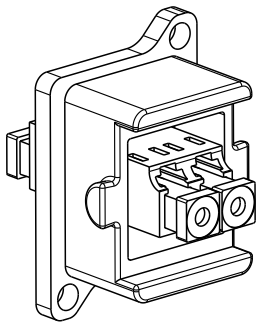
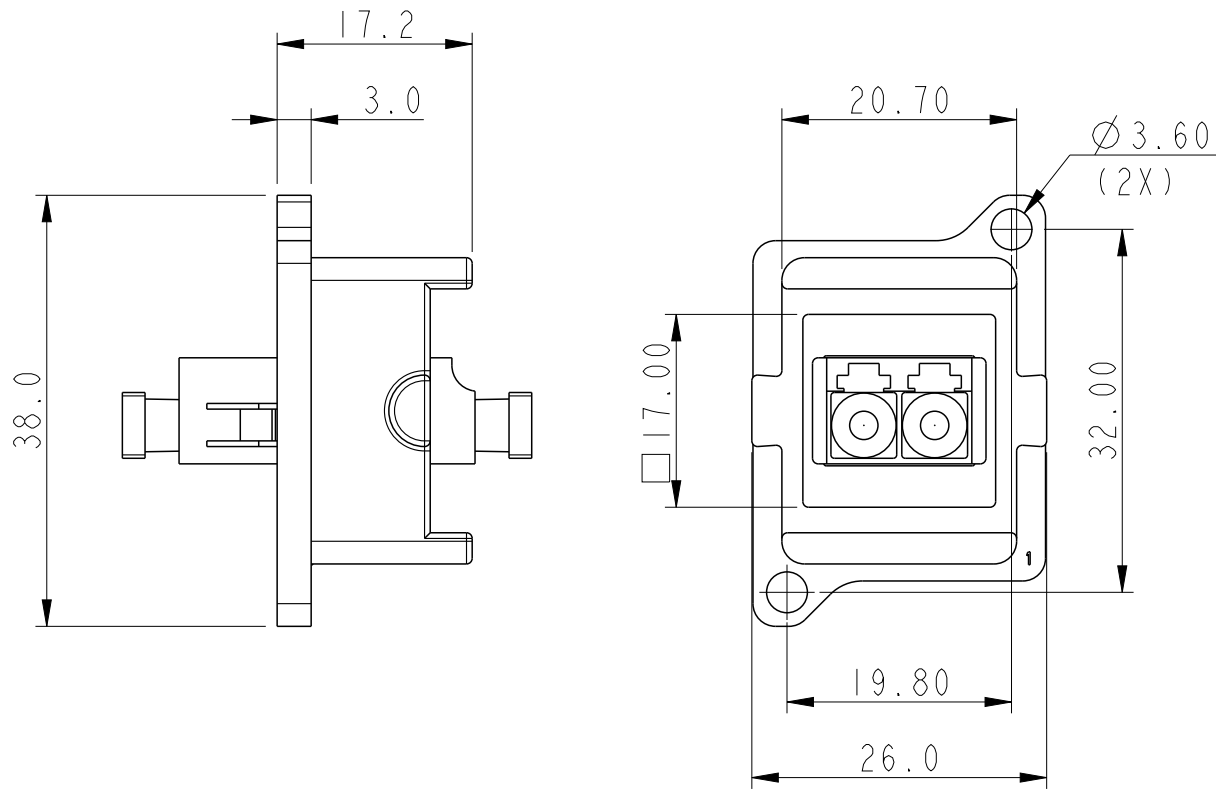
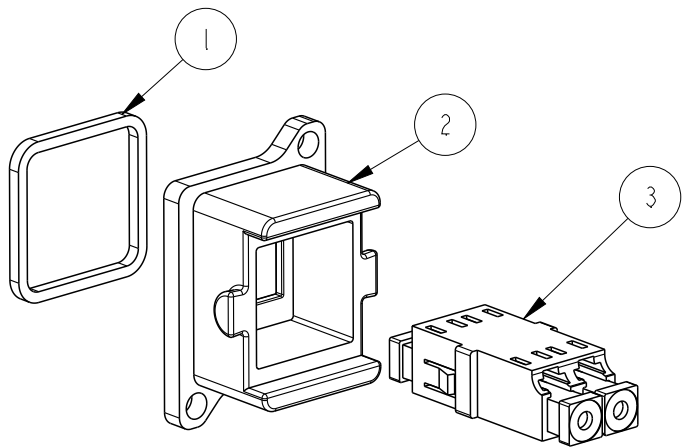


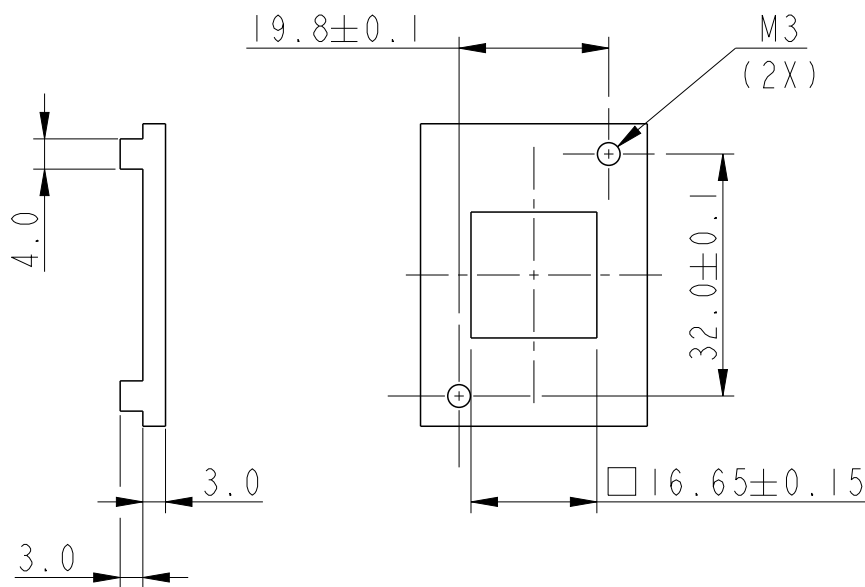
PART NUMBER  
10145423-101LF

BULKHEAD ADAPTER ASSEMBLY FOR OCTIS LC DUPLEX ADPATER PLUG KIT

PACKING CONFIGURATION



PANEL CUTOUT DIMENSIONS



SL NO.	COMPONENT	MATERIAL	QTY	COLOUR
1	SEALING GASKET	SILICONE	1	BLACK
2	BULKHEAD FOR LC ADAPTER	IXEF	1	BLACK
3	LC DUPLEX ADAPTER	THERMOPLASTIC+CERAMIC	1	AQUA

- NOTES:
1. TO BE USED WITH OCTIS PLUG KIT FOR LC DUPLEX ADAPTER VERSION, PITCH 26 MM- PART NUMBER 10145416-XXXLF
  2. CASTED MOUNTING PANEL SHOULD HAVE ON ITS REAR SIDE INTEGRAL RECTANGULAR REINFORCED RIBS OF 3MM THICKNESS AND 4MM WIDTH ALONG THE MOUNTING SCREW PLANE AT THE TOP AND BOTTOM TO ACCOMODATE THE BLIND INTERNAL SCREW THREAD

spec ref				dr		Jibin John	2017/11/29		projection			MM		size		A3	scale		1:1
tolerance std		TOLERANCES UNLESS OTHERWISE SPECIFIED		eng		Alosius, Stali		2019/04/08				ecn no		ELX-I-33132-2					
ISO 406						chr		-											
ISO 1101				appr		K-Paul Biju		2019/04/08		product family		OCTIS		rel level		Released			
surface		linear	0.X		±0.3		Amphenol FCi		title		LC ADAPTER AND BULKHEAD ASSEMBLY		dwg no		10145423		rev		B
			0.XX		±0.10														
			0.XXX		±0.05														
ISO 1302		angular	0°		±2°				cat. no.		-		Product - Customer Drw		sheet 1 of 1				