

THIS DRAWING IS UNPUBLISHED.

RELEASED FOR PUBLICATION

20

© COPYRIGHT 20

BY -

ALL RIGHTS RESERVED.

REVISIONS

P	LTR	DESCRIPTION	DATE	DWN	APVD
	A	DRAWING ACTIVATED AS PER ECR-19-006417	25APR2019	RS	CVS
	A1	REVISED NOTES	30OCT2019	MZ	MZ
	B	REVISED PER ECR-19-019350	18DEC2019	SB	FD

NOTES:

1. MATERIALS:

CONTACT : COPPER ALLOY, TIN PLATED
HOUSING: PPE+PS; COLOR: DARK GREY
BUTTON: PPE+PS; COLOR: DARK GREY

DIMENSIONS BEFORE APPLICATION

2. APPLICABLE CABLES:

A) APPROVED ACCORDING UL FILE E353372 FOR SOLAR CABLES FROM 5.9 mm TO 7.2 mm

B) UNDER APPROVAL BY IEC62852 FOR FOLLOWING CABLE TYPES FROM DEFINED MANUFACTURERS:

TE CABLE PN 2328394, 2.5 mm² (14 AWG)
TE CABLE PN 2270245, 4 mm² (12 AWG)
TE CABLE PN 2270260, 4 mm² (12 AWG)
TE CABLE PN 2328400, 6 mm² (10 AWG)
TE CABLE PN 2270215, 4 mm² (12 AWG)
TE CABLE PN 2270259, 4 mm² (12 AWG)

BYSON 6351D 2.5mm²/14AWG

BYSON 6352D 4mm²/12AWG

BYSON 6353D 6mm²/10AWG

HONGLIN DPN4012A20 4mm²/12AWG

3. MATING CONNECTORS, TE PART NO.:

2315176-1 (SOLARLOK 2.0)

x-2270024-y (PV4-S)

x-1971920-y (PV4-PM)

4 TUV CERTIFICATION IN PROGRESS / PENDING APPROVAL

5 MOULDING PRODUCTION DATE MARKING

6 AREA FOR LASER PRINTING DATA MATRIX AND PARTNUMBER
PPPPPPPPVYYWDFL####
- P P P P P P P P = PART NUMBER
- V = VERSION CUSTOMER DRAWING
- Y Y = LAST TWO DIGITS OF YEAR 19
- W W = WEEK NUMBER
- D = WEEKDAY (1 MONDAY)
- F = FACTORY CODE (T = TRUTNOV)
- L = MANUFACTURING LINE (M = MANUAL)
- ##### = SERIAL NUMBER (PRODUCTION PER DAY)

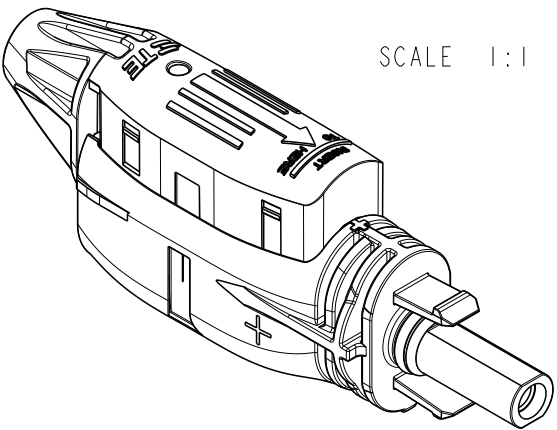
7 CABLE FOR REFERENCE ONLY

8 WHEN BUTTON AND HOUSING RIBS ARE ALIGNED,
THE CONNECTOR IS CORRECTLY TERMINATED

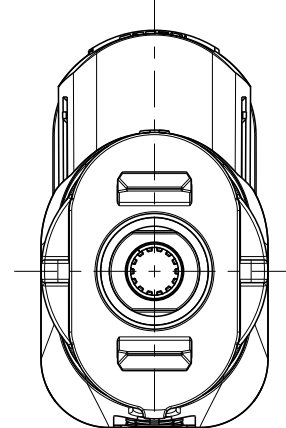
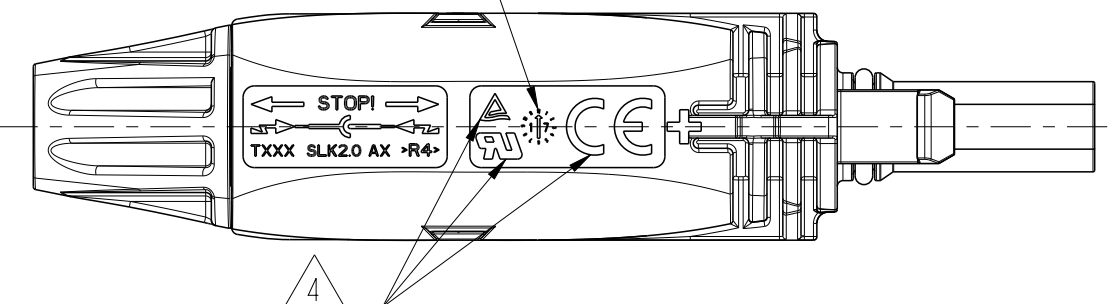
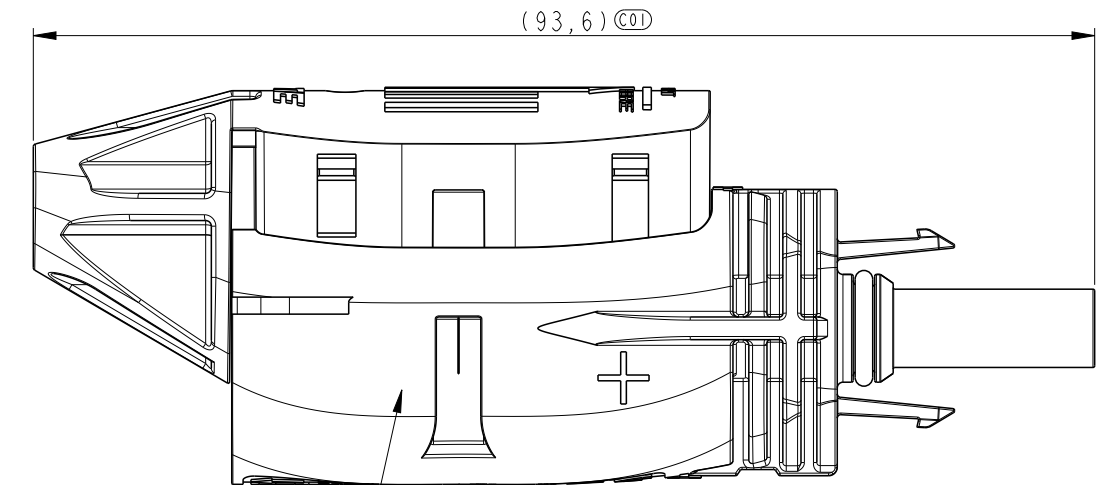
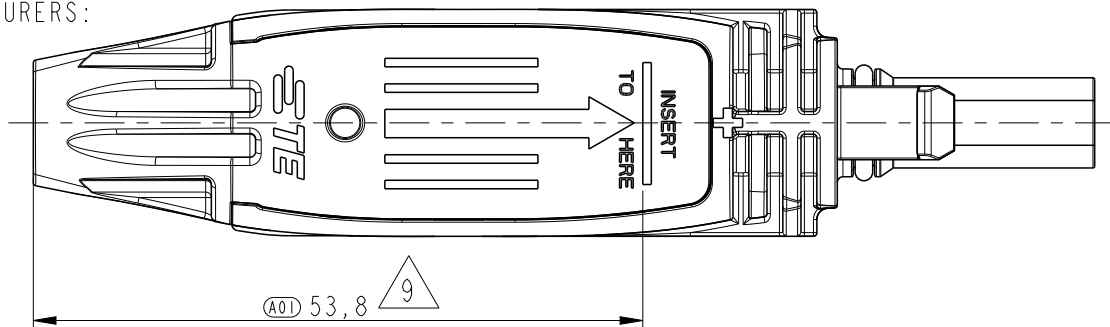
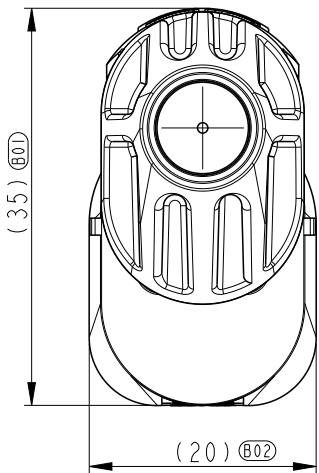
9 MINIMUM CABLE INSERTION LENGTH 53.8 ± 2 mm

10. CHECK APPLICATION SPEC 114-133104
FOR PROPER CABLE CONNECTION


11. PACKED IN SHIPPABLE BOXES OF 200PCS, INSIDE THE BOX
ARE 20 BAGS OF 10 CONNECTORS EACH.
OTHER PACKAGING FORMAT AND QUANTITY UNDER DEVELOPMENT.



SCALE 1:1



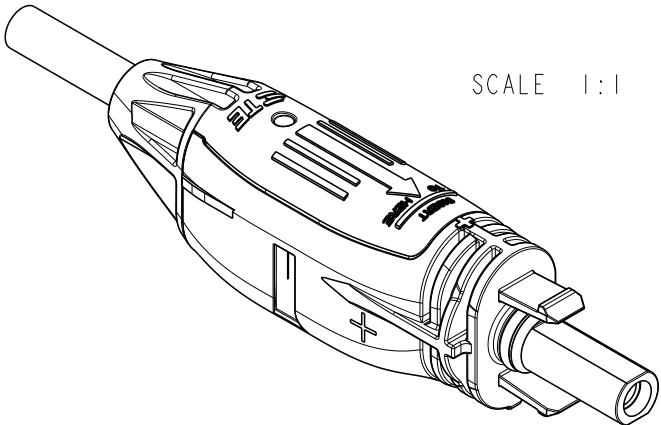
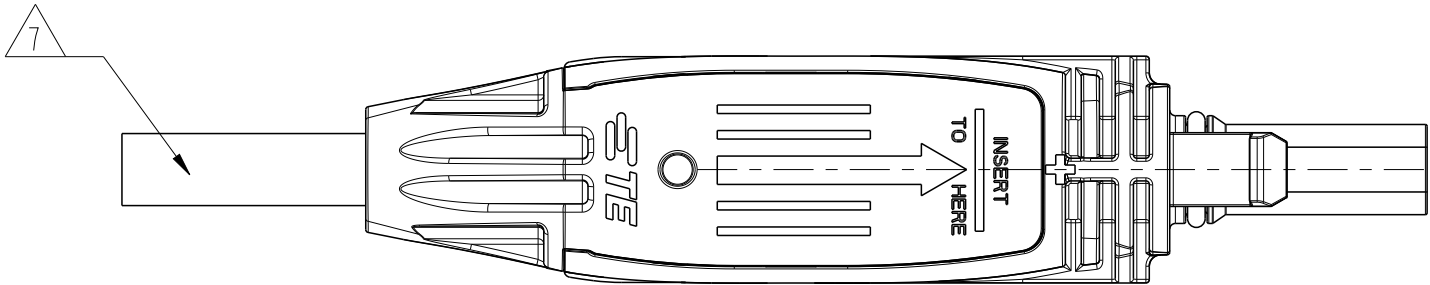
P/N 2308033-1 AS SHOWN
MODEL CODE: SLK-SK-1-BL-XX

THIS DRAWING IS A CONTROLLED DOCUMENT.		DWN 17NOV2017 RAGHAVENDRA.K	 TE Connectivity		
		CHK 31JAN2018 F.DENDAS			
		APVD 31JAN2018 O.LFIJNSE	NAME SOLARLOK 2.0 SOCKET CONNECTOR		
DIMENSIONS: mm		PRODUCT SPEC 108-133104			
		APPLICATION SPEC 114-133104			
MATERIAL SEE NOTES		WEIGHT -	SIZE A3	CAGE CODE 00779	DRAWING NO C-2308033
		CUSTOMER DRAWING	SCALE 3:2	SHEET 1 OF 2	REV B

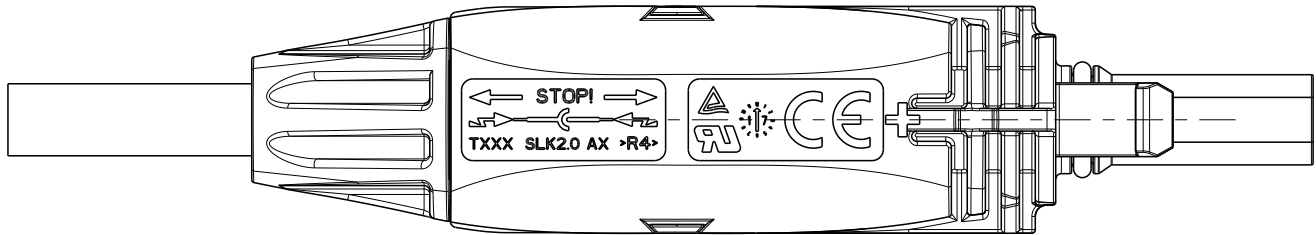
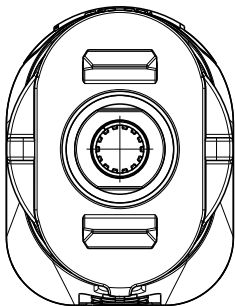
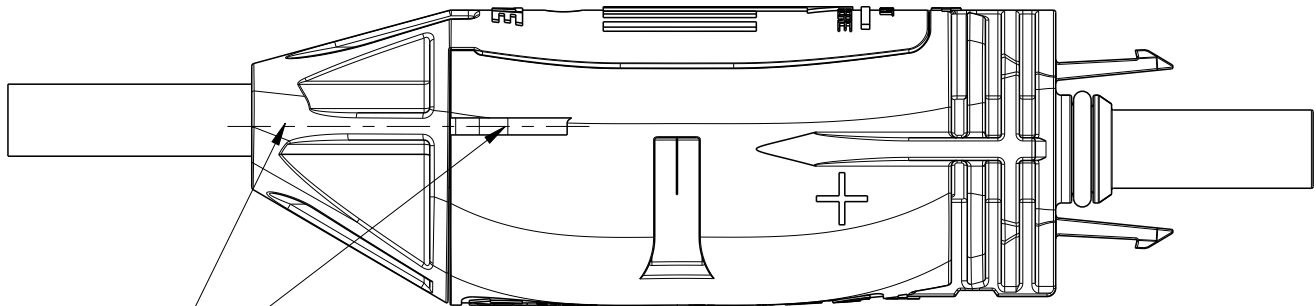
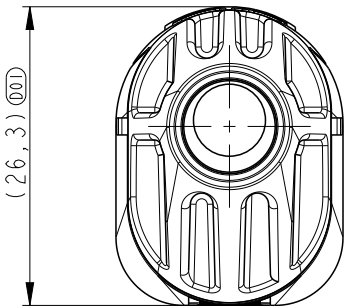
REVISIONS

P	LTR	DESCRIPTION	DATE	DWN	APVD
	-	SEE SHEET 1	-	-	-

DIMENSIONS AFTER APPLICATION

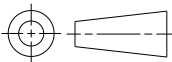


SCALE 1:1



THIS DRAWING IS A CONTROLLED DOCUMENT.

DIMENSIONS:
mm



MATERIAL
SEE NOTES

TOLERANCES UNLESS
OTHERWISE SPECIFIED:

0 PLC ±0.5
1 PLC ±0.5
2 PLC ±0.5
3 PLC ±
4 PLC ±
ANGLES ±3°

FINISH

-

DWN 17NOV2017

RAGHAVENDRA.K

CHK 31JAN2018

F.DENDAS

APVD 31JAN2018

O.L.FIJNSE

PRODUCT SPEC

108-133104

APPLICATION SPEC

114-133104

WEIGHT

-

CUSTOMER DRAWING



TE Connectivity

NAME SOLARLOK 2.0 SOCKET CONNECTOR

-

SIZE

A3

CAGE CODE

00779

DRAWING NO

C-2308033

RESTRICTED TO

-

SCALE

3:2

SHEET

2 OF 2

REV

B